

Neighborhood Wall Hanging & Place Mats

Designed by Heidi Pridemore

Featuring the Neighborhood Collection by Alyson Beaton

Wall Hanging Size: 24 ¾" x 26"

Place Mat Size: 12" x 16"



Check www.windhamfabrics.com Free Project section to see if there are any pattern updates before you start your quilt project

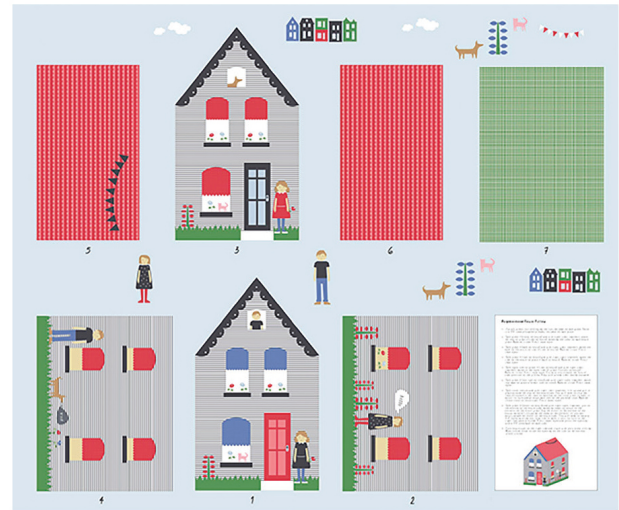


812 Jersey Ave – Jersey City, NJ 07310 – 201.659.0444 ~ FAX: 201.659.9719
www.windhamfabrics.com email: retail@windhamfabrics.com

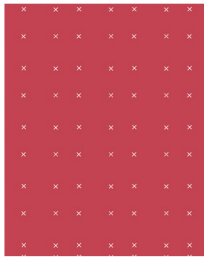
Neighborhood Wall Hanging & Place Mats

Estimated Fabric Requirements:

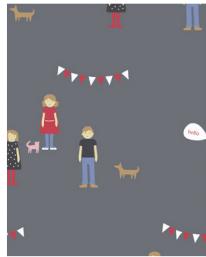
- 1 Panel – 41280P-X Multi
- ¼ yard – 41288-6 Red
- ⅔ yard – 41282-4 Grey
- ¼ yard – 41284-1 Blue
- ⅔ yard – 41283-5 Green
- 1 ½ yards – 41286-1 Blue



41280P-X Multi



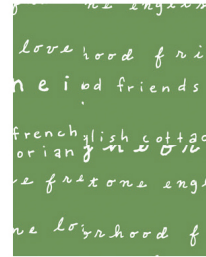
41288-6 Red



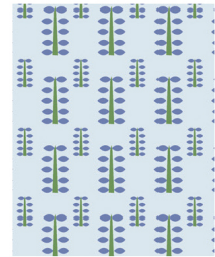
41282-4 Grey



41284-1 Blue



41283-5 Green



41286-1 Blue



Neighborhood Wall Hanging & Place Mats

Page 3

Cutting Instructions:

Quilt Cutting Instructions

Fabric A: Panel – Multi

Wall Hanging

- Fussy cut one house front and one house back.
- Fussy cut and piece together one “sky strip with clouds”, approximately 4” x 17”.
- See instructions to cut three hills using the templates provided.

Place Mats

- Fussy cut two house sides, each approximately 10” x 13”.
- Fussy cut two roof pieces, each approximately 2 ½” x 13”.
- Fussy cut four sky pieces, each approximately 2” x 12”.

Fabric B: X's – Red

Wall Hanging

- Cut one 1 ½” x width of fabric (WOF) strip. Sub-cut the strip into two 1 ½” x 18 ½” strips.
- Cut one 1 ½” x WOF strip. Sub-cut the strip into two 1 ½” x 19 ¼” strips.

Fabric C: People – Grey

Wall Hanging

- Cut two 3 ½” x 20 ½” length of fabric (LOF) strips.
- Cut two 3 ½” x 19 ¼” WOF strips from the remaining fabric.

Fabric D: Dogs – Blue

Wall Hanging

- Cut one 3 ½” x WOF strip. Sub-cut the strip into four 3 ½” squares.

Fabric E: Words – Green

Wall Hanging

- Cut three 2 ½” x WOF strips for the binding

Place Mats

- Cut four 2 ½” x WOF strips for the binding.

Backing: Plants – Blue

Wall Hanging

- Cut one 33” x 34” strip for the back.

Place Mats

- Cut one 16” x WOF strip. Sub-cut the strip into two 16” x 20” strips for the backs.



WINDHAM FABRICS

www.windhamfabrics.com

Neighborhood Wall Hanging & Place Mats

Page 4

Wall Hanging Block Assembly:

1. Following the manufacturer's instructions, trace the listed number of each template onto the paper side of the fusible web. Roughly cut out each template about $\frac{1}{8}$ " outside the drawn lines.
2. Press each template onto the wrong side of the fabrics as listed on the templates. Cut out each template on the drawn lines.
3. Refer to the quilt photo to arrange and press the three hills to the bottom of the Fabric A sky piece (Fig. 1). Refer to Quilt Photo to press the small houses to the top of the middle hill.
4. Finish the raw edges of each shape with a decorative stitch such as a buttonhole or satin stitch to complete the Top Strip.
5. Sew the front and back house pieces together, side by side (Fig. 2) to make House Strip.

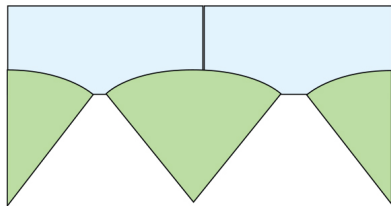


Fig. 1

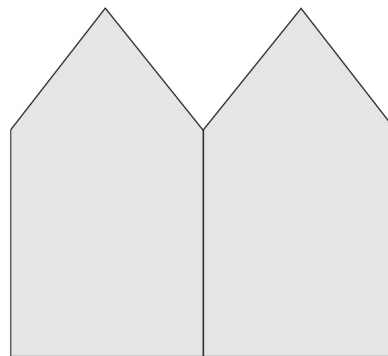


Fig. 2

6. Sew the Top Strip to the top of the House Strip. Trim as necessary to $17 \frac{1}{4}$ " x $18 \frac{1}{2}$ " to make the Center Block.

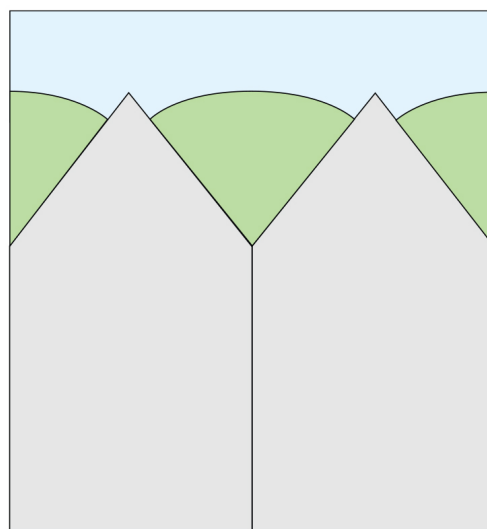


Fig. 3



WINDHAM FABRICS

www.windhamfabrics.com

Neighborhood Wall Hanging & Place Mats

Page 5

Wall Hanging Assembly – Refer to Figure 4 while assembling the wall hanging top:

7. Sew one 1 ½" x 18 ½" Fabric B strip to each side of the Center Block. Sew one 1 ½" x 19 ¼" Fabric B strip to the top and to the bottom of the Center Block.
8. Sew one 3 ½" x 20 ½" Fabric C strip to the each side of the Center Block. Sew one 3 ½" Fabric D square to each end of one 3 ½" x 19 ¼" Fabric C strip. Repeat to make a second strip. Sew the strips to the top and to the bottom of the Center Block to make the quilt top.
9. Layer and quilt as desired.
10. Sew the three 2 ½" x WOF Fabric E strips together, end to end with 45-degree seams, to make the binding. Fold this long strip in half, lengthwise with wrong sides together, and press.
11. Bind as desired.

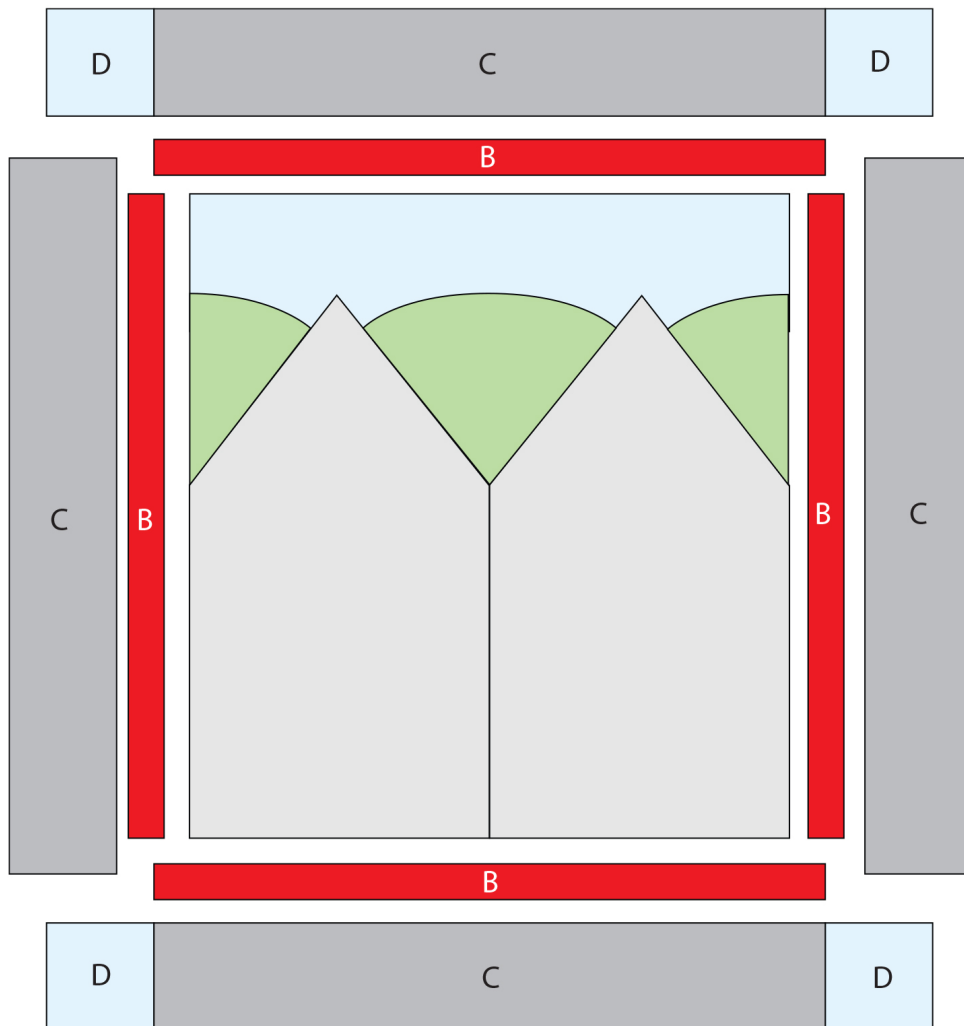


Fig. 4



WINDHAM FABRICS

www.windhamfabrics.com

Neighborhood Wall Hanging & Place Mats

Page 6

Place Mat Assembly – Refer to Figure 5 while assembling the (2) place mat tops:

12. Sew one Fabric A roof piece to the top of one Fabric A house side.
13. Sew one 2" x 12" Fabric A sky strip to each side of the Fabric A house side to make the place mat top.
14. Repeat Steps 12-13 to make the second place mat.
15. Layer and quilt as desired.
16. Sew the four 2 ½" x WOF Fabric E strips together, end to end with 45-degree seams, to make the binding. Fold this long strip in half, lengthwise with wrong sides together, and press. Divide the long strip into two equal lengths.
17. Bind as desired.

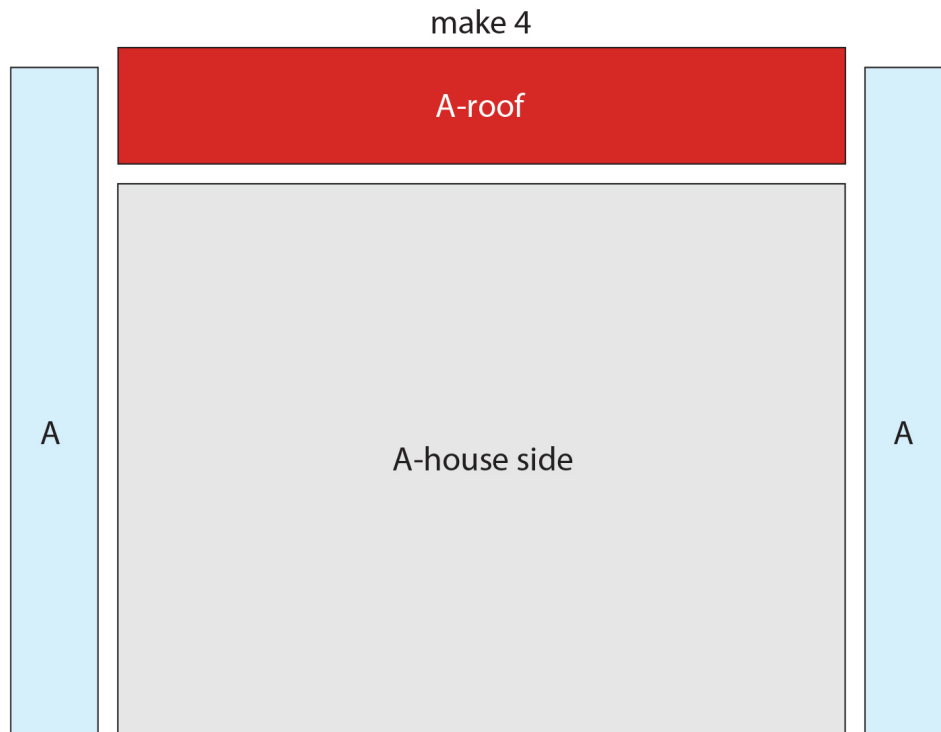


Fig. 5

Neighborhood Wall Hanging & Place Mats

Middle Hill
Template

1" square
for scale

Left Hill
Template

Right Hill
Template

**Be sure to visit
www.windhamfabrics.com to
see the complete collection
and to download this and other
FREE Projects**



WINDHAM FABRICS

www.windhamfabrics.com